

List of pages in this Trip Kit

Trip Kit Index

Airport Information For TVSA

Terminal Charts For TVSA

Revision Letter For Cycle 22-2020

Change Notices

Notebook

General Information

Location: KINGSTOWN VCT
ICAO/IATA: TVSA / SVD
Lat/Long: N13° 09.6', W061° 08.9'
Elevation: 136 ft

Airport Use: Public
Daylight Savings: Not Observed
UTC Conversion: +4:00 = UTC
Magnetic Variation: 15.0° W

Fuel Types: 100 Octane (LL), Jet A
Customs: No
Airport Type: IFR
Landing Fee: No
Control Tower: Yes
Jet Start Unit: No
LLWS Alert: No
Beacon: Yes

Sunrise: 1006 Z
Sunset: 2135 Z

Runway Information

Runway: 22
Length x Width: 8999 ft x 148 ft
Surface Type: asphalt
TDZ-Elev: 52 ft
Lighting: Edge
Displaced Threshold: 984 ft

Runway: 04
Length x Width: 8999 ft x 148 ft
Surface Type: asphalt
TDZ-Elev: 136 ft
Lighting: Edge, ALS
Stopway: 197 ft

Communication Information

ATIS: 132.550
Argyle Tower: 118.800
Argyle Ground: 121.900
Argyle Approach: 120.800

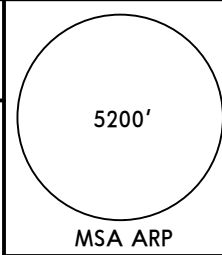
TVSA
ARGYLE INTL

JEPPESEN KINGSTOWN, ST VINCENT
24 FEB 17 **10-3** Eff 2 Mar

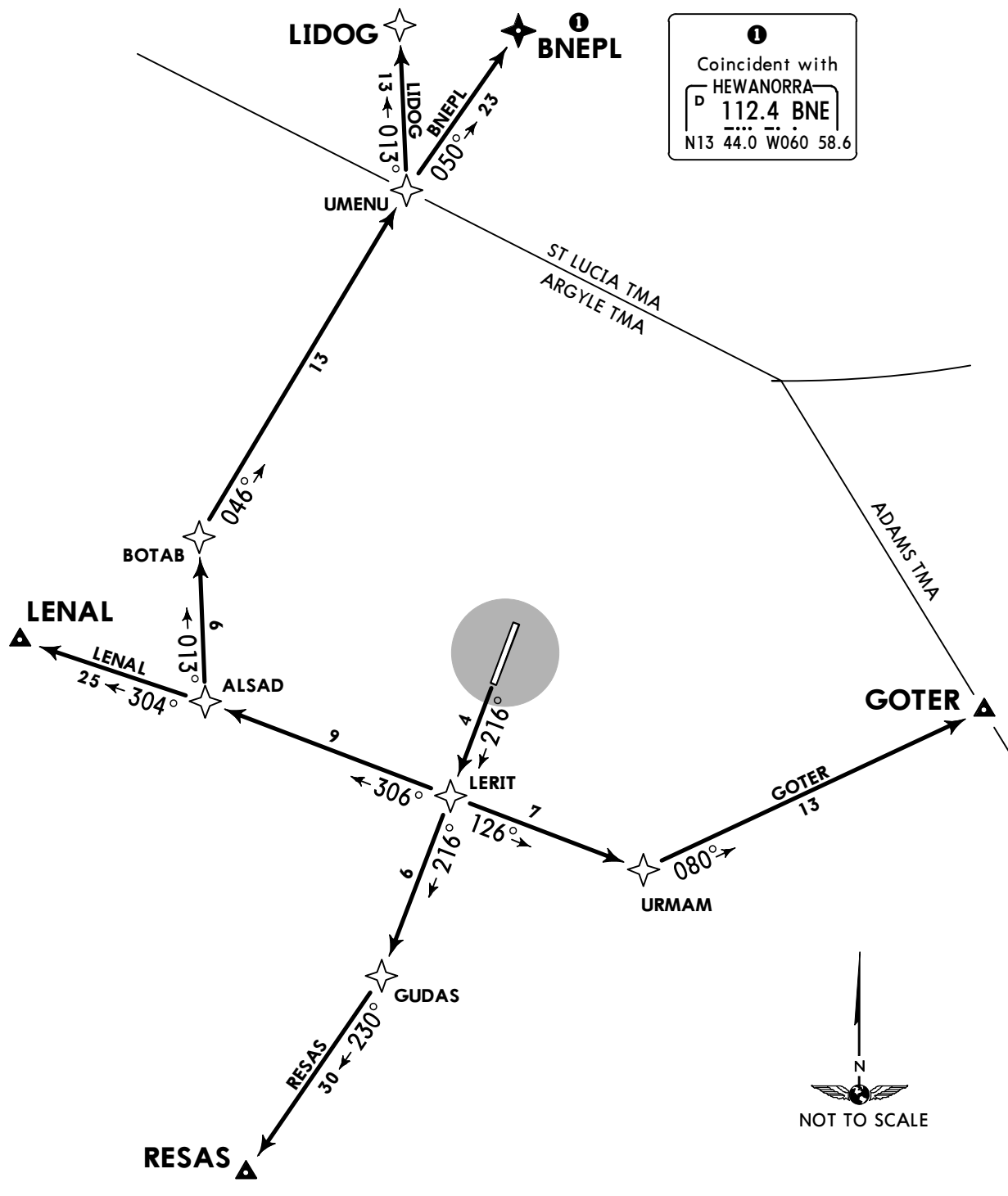
RNAV SID

Apt Elev
136'

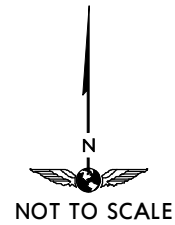
Trans level: By ATC Trans alt: 5200'



**BNEPL [BNEPL], GOTER [GOTER], LENAL [LENAL]
LIDOG [LIDOG], RESAS [RESAS]
RNAV (GNSS) DEPARTURES
(RWY 22)**



1
Coincident with
HEWANORRA
D 112.4 BNE
N13 44.0 W060 58.6



INITIAL CLIMB

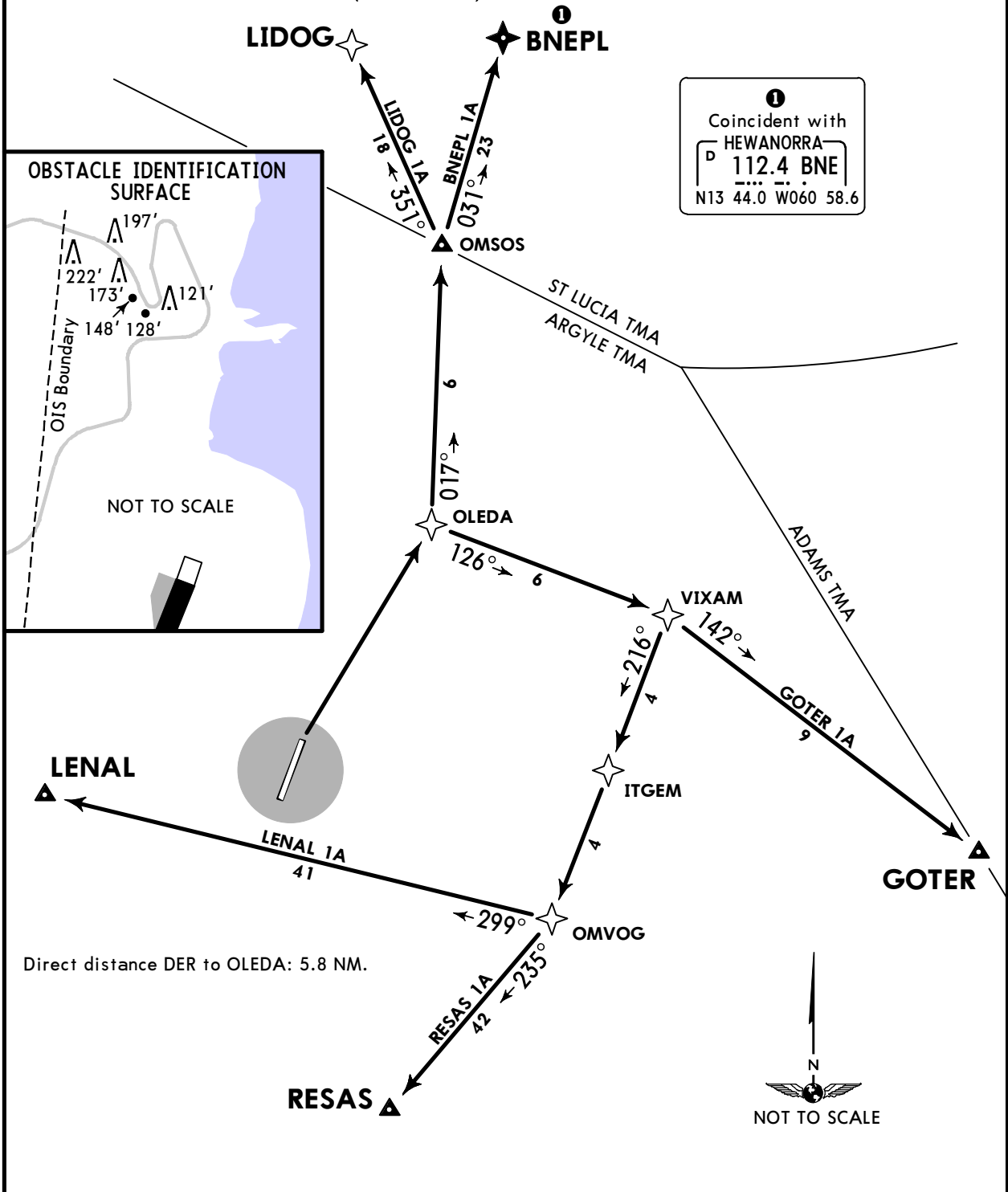
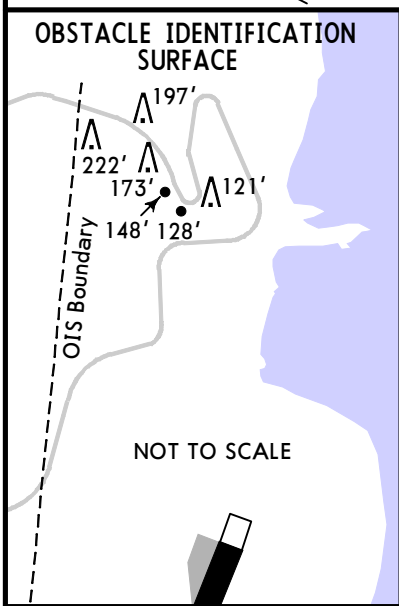
Climb direct to LERIT.

SID	ROUTING
BNEPL	At LERIT direct to ALSAD, to BOTAB, to UMENU, to BNEPL.
GOTER	At LERIT direct to URMAM, to GOTER.
LENAL	At LERIT direct to ALSAD, to LENAL.
LIDOG	At LERIT direct to ALSAD, to BOTAB, to UMENU, to LIDOG.
RESAS	At LERIT direct to GUDAS, to RESAS.

TVSA
ARGYLE INTL

Apt Elev 136'	Trans level: By ATC Trans alt: 5200' Ceiling/visibility requirement: the obstacles displayed inside the OIS must be visible from the control tower for take-off (1.2 NM).	5200' MSA ARP
-------------------------	--	------------------

**BNEPL 1A [BNEP1A], GOTER 1A [GOTE1A]
LENAL 1A [LENA1A], LIDOG 1A [LIDO1A]
RESAS 1A [RESA1A] RNAV (GNSS) DEPARTURES
(RWY 04)**



Direct distance DER to OLEDA: 5.8 NM.



INITIAL CLIMB

Climbing RIGHT turn direct to OLEDA.

SID	ROUTING
BNEPL 1A	At OLEDA direct to OMSOS, to BNEPL.
GOTER 1A	At OLEDA direct to VIXAM, to GOTER.
LENAL 1A	At OLEDA direct to VIXAM, to ITGEM, to OMVOG, to LENAL.
LIDOG 1A	At OLEDA direct to OMSOS, to LIDOG.
RESAS 1A	At OLEDA direct to VIXAM, to ITGEM, to OMVOG, to RESAS.

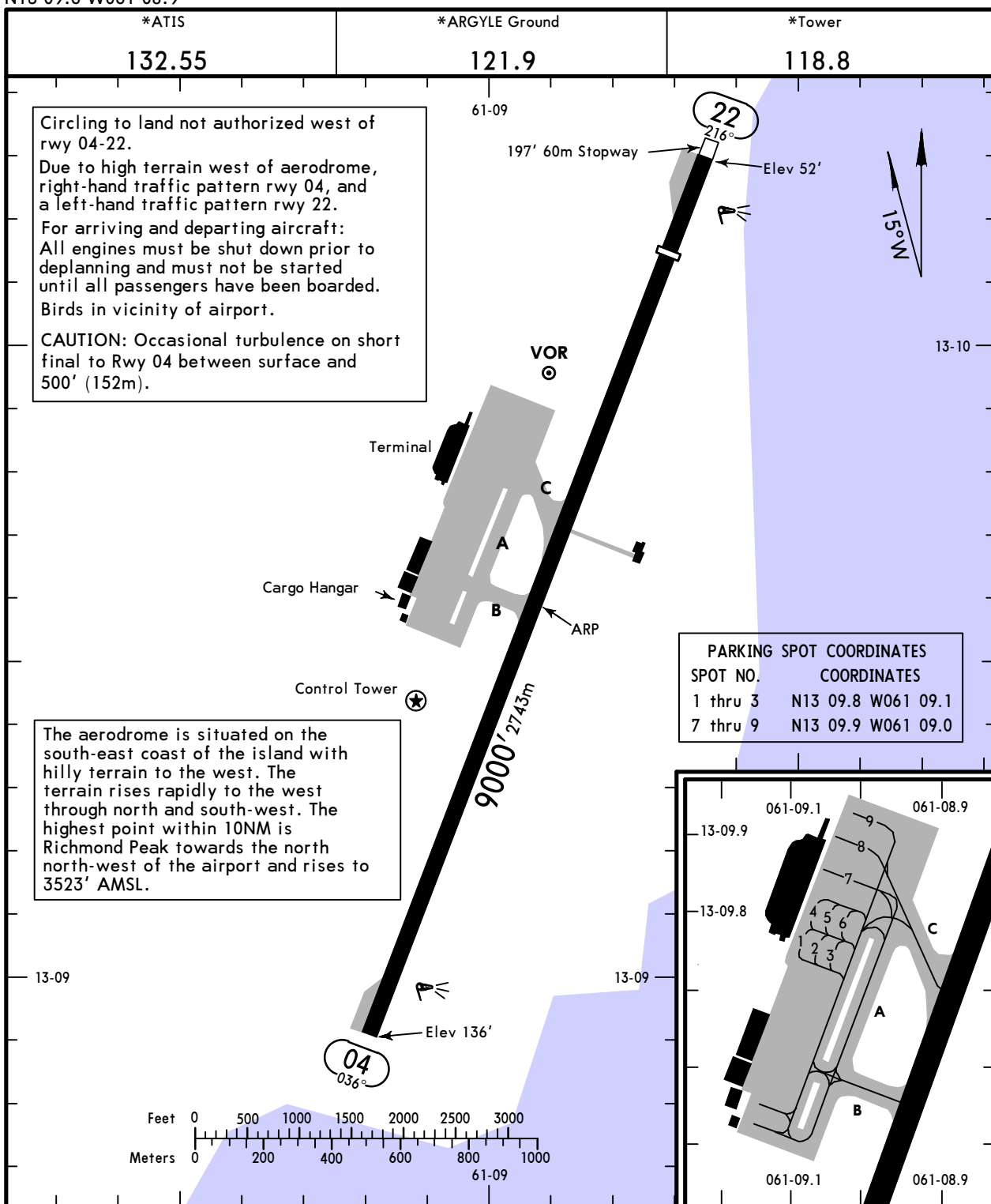
TVSA

Apt Elev **136'**
N13 09.6 W061 08.9

JEPPESSEN KINGSTOWN, ST VINCENT

4 OCT 19 **10-9** Eff 10 Oct

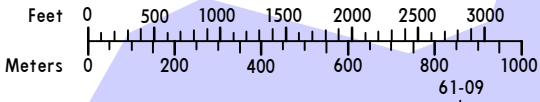
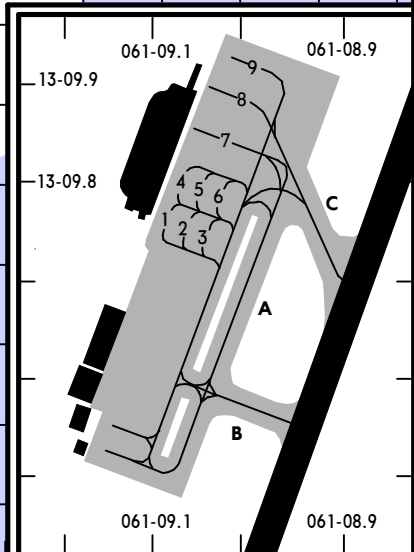
ARGYLE INTL



Circling to land not authorized west of rwy 04-22.
Due to high terrain west of aerodrome, right-hand traffic pattern rwy 04, and a left-hand traffic pattern rwy 22.
For arriving and departing aircraft:
All engines must be shut down prior to deplaning and must not be started until all passengers have been boarded.
Birds in vicinity of airport.
CAUTION: Occasional turbulence on short final to Rwy 04 between surface and 500' (152m).

The aerodrome is situated on the south-east coast of the island with hilly terrain to the west. The terrain rises rapidly to the west through north and south-west. The highest point within 10NM is Richmond Peak towards the north north-west of the airport and rises to 3523' AMSL.

PARKING SPOT COORDINATES	
SPOT NO.	COORDINATES
1 thru 3	N13 09.8 W061 09.1
7 thru 9	N13 09.9 W061 09.0



ADDITIONAL RUNWAY INFORMATION						
RWY		USABLE LENGTHS				
		Threshold	LANDING BEYOND	Glide Slope	TAKE-OFF	WIDTH
04	RL SALS PAPI-L (angle 3.0°)				8015' 2443m	148'
22	RL REIL PAPI-L (angle 3.5°)	8015' 2443m				45m

TAKE-OFF					
AIR CARRIER (JAA)			AIR CARRIER (FAR 121)		
LVP must be in force All Rwys RCLM (Day only) or RL		All Rwys RCLM (Day only) or RL	All Rwys Adequate Vis Ref		
A	250m	400m	2 Eng	400m	
B			3 & 4 Eng		
C	300m	400m			
D					

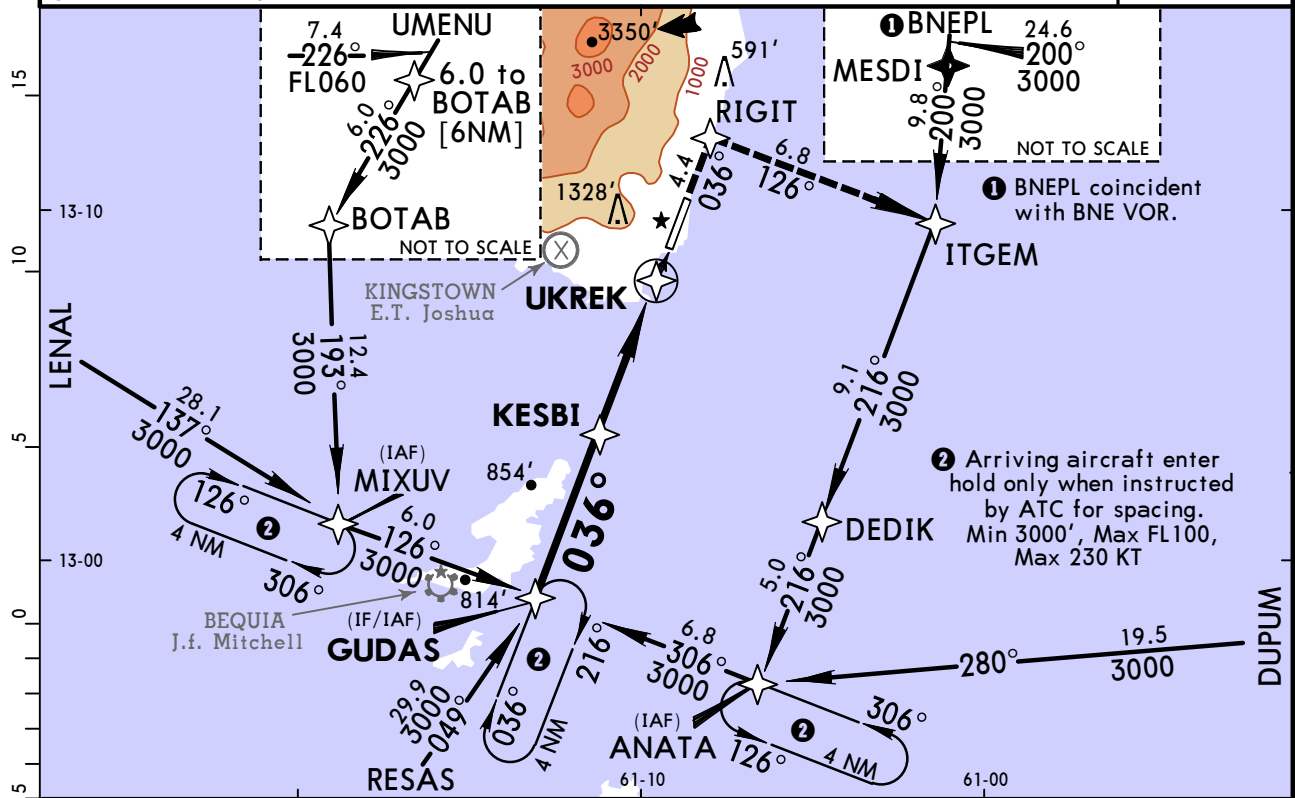
TVSA

JEPPESEN KINGSTOWN, ST VINCENT

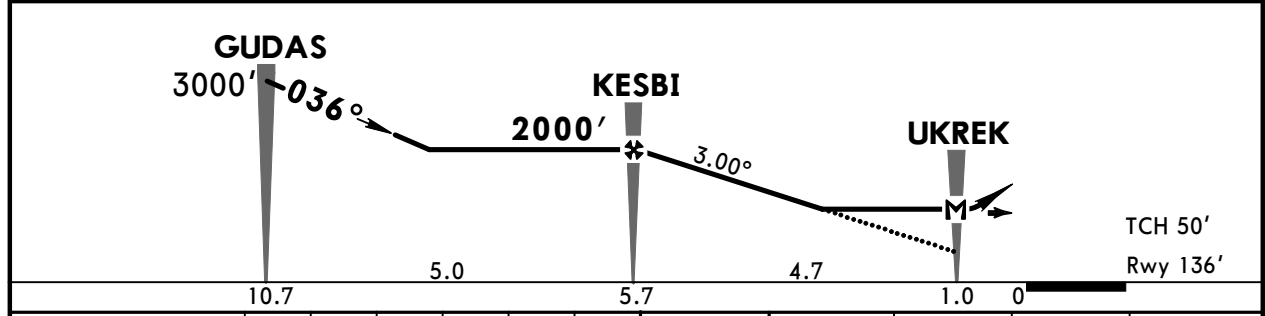
ARGYLE INTL

12 JUL 19 (12-1) Eff 18 Jul RNAV (GNSS) Rwy 04

*ATIS 132.55		*ARGYLE Approach 120.8		*ARGYLE Tower 118.8		*Ground 121.9	
RNAV	Final Apch Crs 036°	Minimum Alt KESBI 2000' (1864')	LNAV MDA(H) Refer to Minimums	Apt Elev 136' Rwy 136'		5200 MSA ARP	
MISSED APCH: Climb to 3000' direct RIGIT, then ITGEM, DEDIK, ANATA, and hold at GUDAS, or as directed by ATC.							
Alt Set: hPa (IN on req) Apt Elev: 5 hPa Trans level: By ATC Trans alt: 5200'							
1. GNSS required. DME/DME not authorized. 2. CAUTION: high terrain west of runway. 3. Unless ATC clearance is obtained for an RNAV/GNSS/procedure, the navigation and position-reporting of all aircraft shall be conducted with reference to conventional ground-based navigation aids.							



DIST to UKREK	4.0	3.0	2.0
ALTITUDE	1780'	1460'	1140'



Gnd speed-Kts	70	90	100	120	140	160	SALS PAPI	3000'	D	RIGIT
Descent Angle 3.00°	372	478	531	637	743	849				

STRAIGHT-IN LANDING RWY 04 LNAV						CIRCLE-TO-LAND					
MDA(H) A: 850' (714') C: 1020' (884') B: 850' (714') D: 1040' (904')						Not Authorized WEST of Rwy 04/22					
ALS out						Max Kts					
A	1900m					100	850' (714') -1900m				
B	4400m					135	1020' (884') -4400m				
C	4800m					180	1040' (904') -4800m				
D						205					

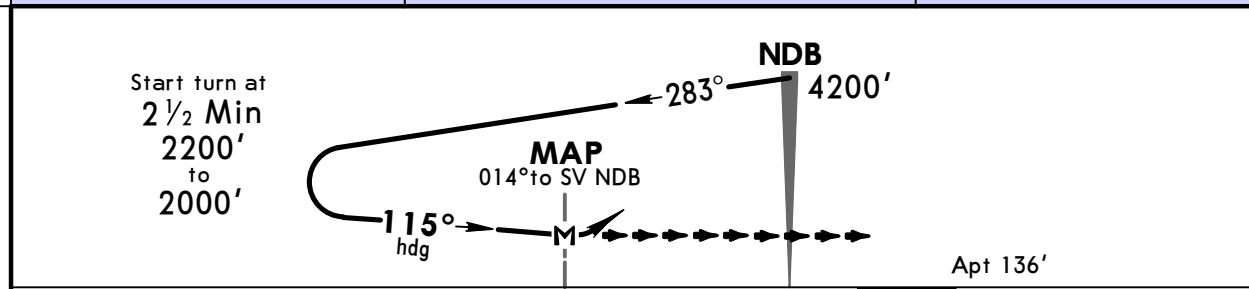
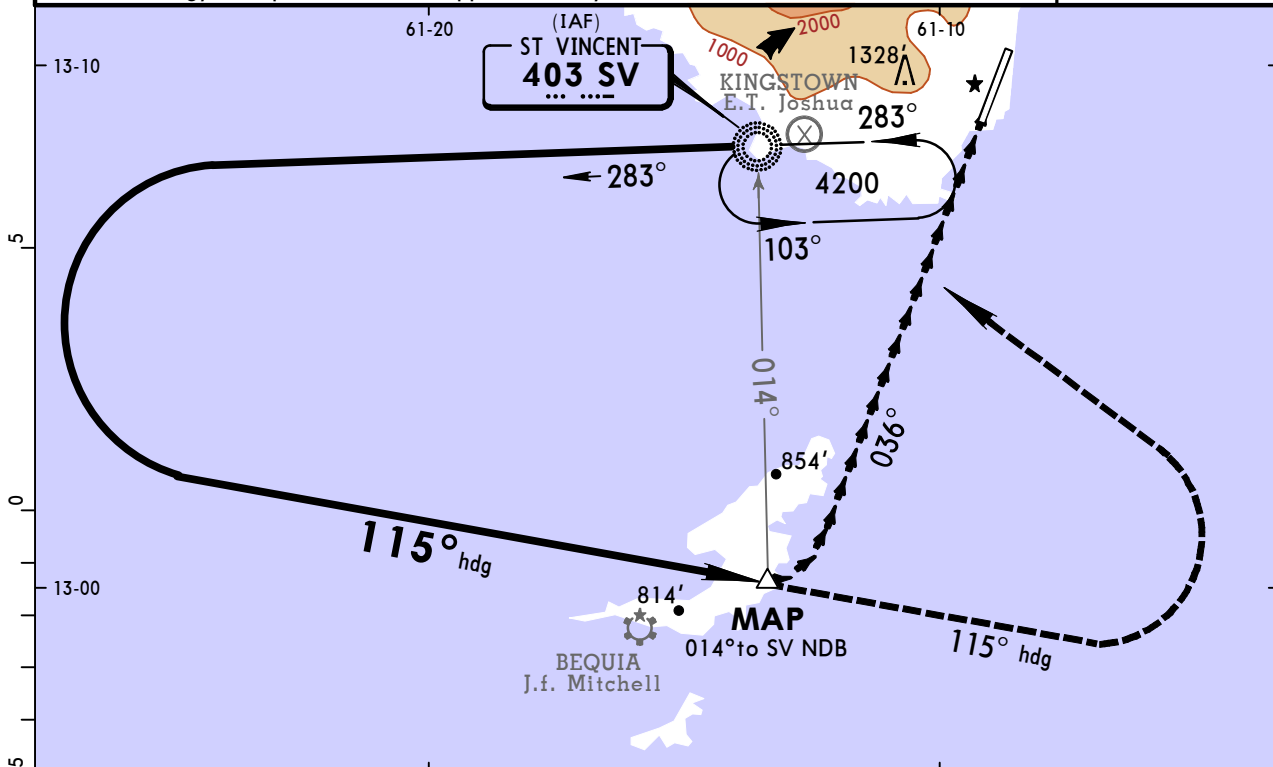
PANS OPS

TVSA ARGYLE INTL

JEPPESSEN
12 JUL 19
Eff 18 Jul 16-1

KINGSTOWN, ST VINCENT NDB CLOUDBREAK RWY 04

*ATIS 132.55		*ARGYLE Approach 120.8		*ARGYLE Tower 118.8		*Ground 121.9	
NDB SV 403	Final Apch Crs 115° hdg	No FAF	MDA(H) Refer to Minimums	Apt Elev 136'		<p>MSA SV NDB</p>	
<p>MISSED APCH: Must be at MDA(H) at the MAP (014° bearing to SV NDB) for optimum descent profile. If runway is not in sight, maintain heading of 115° and climb to 4200' then LEFT turn within the 4200' MSA area/segment to the SV NDB and hold or as directed by ATC.</p>							
<p>Alt Set: hPa Apt Elev: 5 hPa Trans level: By ATC Trans alt: 5200'</p> <p>1. CAUTION: Under no circumstances shall an aircraft home to the NDB on the inbound leg after completing the left turn onto the final approach heading 115°. Terrain clearance cannot be assured on a heading less than 115°. 2. CAUTION: During daylight, pilots must ensure correct visual identification of Argyle, as, MAP at 014° bearing to SV NDB, the de-commissioned E.T. Joshua Airport will be at approximately 9 o'clock, while the Argyle airport will be at approximately 10 o'clock.</p>							



MAP at MAP	Lighting - Refer to Airport Chart	4200' on 115° hdg
------------	-----------------------------------	-------------------

		CIRCLE-TO-LAND	
		Not Authorized WEST of Rwy 04/22	
	Max Kts	MDA(H)	
A	100	2000' (1864') -2000m	
B	135	2000' (1864') -2400m	
C	180		
D	205	2000' (1864') -4800m	

PANS OPS

Chart changes since cycle 21-2020

ADD = added chart, REV = revised chart, DEL = deleted chart.

ACT	PROCEDURE IDENT	INDEX	REV DATE	EFF DATE
-----	-----------------	-------	----------	----------

KINGSTOWN, (ARGYLE INTL - TVSA)

TERMINAL CHART CHANGE NOTICES

No Chart Change Notices for Airport TVSA